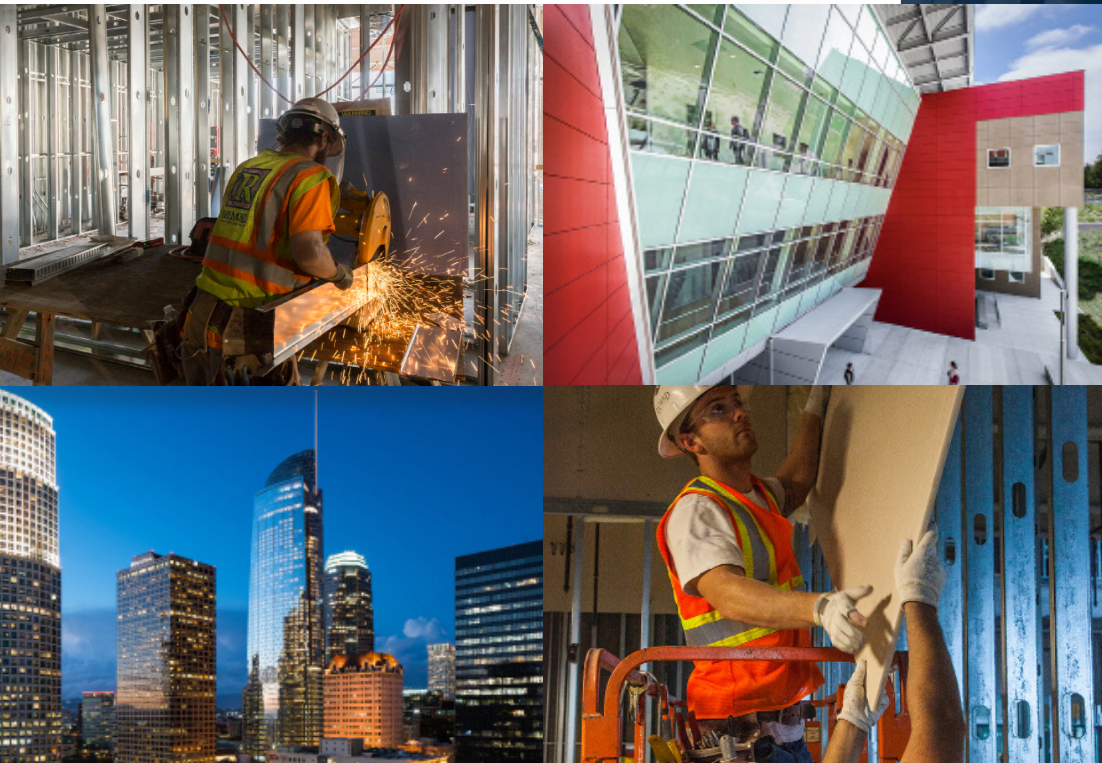


# THE RAYMOND GROUP

## STATEMENT OF QUALIFICATIONS



# OUR VALUES

**TRUST** | Conducting ourselves in a manner that will earn the respect of our employees, clients and vendors

**INTEGRITY** | Operating with the highest moral standards

**QUALITY** | Achieving excellence in all that we do

**SAFETY** | Protecting the well-being of our employees

**RESPECT** | Recognizing and appreciating people's contributions

**CONTINUOUS IMPROVEMENT** | Committing to move from good to great

**WORK/LIFE HARMONY** | Balancing a passion for work and a zest for life

**TEAMWORK** | Maximizing the collective talents of our people to accomplish our goals

# PRIMARY MARKET SECTORS

CASINO/GAMING

EDUCATION

ENTERTAINMENT/ATTRACTION

HEALTHCARE

HOSPITALITY

INSTITUTIONAL/CIVIC

OFFICE/CORE AND SHELL

PARKING STRUCTURES

RESIDENTIAL/MULTI-FAMILY HOUSING

RETAIL

TENANT IMPROVEMENT

TRANSPORTATION

# SELF PERFORMED CAPABILITIES

STRUCTURAL FRAMING | LIGHT GAUGE STEEL STUD FRAMING

SPRAY APPLIED AND INTUMESCENT FIREPROOFING

EXTERIOR SHEATHING

EXTERIOR INSULATION AND FINISH SYSTEMS (EIFS)

EXTERIOR PREFABRICATED PANEL SYSTEMS

RAIN SCREEN SYSTEMS | AIR AND WATER BARRIERS

INSULATION | SPRAY INSULATION AND SOUNDPROOFING

DRYWALL

LATH & PLASTER

VENETIAN PLASTER | VENEER PLASTER  
LE DECOR LIME PLASTER SYSTEMS

CAST MOLDING AND ORNAMENTS  
(FRP, GFRP, GFRC)

# THEMED FINISHES

CARVED PLASTER | MILLWORK AND CASEWORK | CUSTOM DOORS AND WINDOWS | TILE | BRICK | STONE AND ROCK WORK | DECORATIVE METAL AND GLASSWORK | SPECIALTY FINISH SYSTEMS | WALL COVERING | PAINTING | SCENIC AGING | FAUX FINISHING





# TABLE OF CONTENTS

CORPORATE PROFILE | QUALITY

SAFETY

VIRTUAL DESIGN AND CONSTRUCTION

PREFABRICATION STRATEGIES

PROJECT EXPERIENCE

# THE RAYMOND GROUP

4589 Pacheco Blvd.  
Martinez, California 94553  
925.680.8300 p  
CA License #307786

520 West Walnut Avenue  
Orange, California 92868  
714.771.7670 p  
CA License #243645

6435 Valley View Boulevard, Suite H  
Las Vegas, Nevada 89118  
702.891.8875 p  
NV License #35448

9560 Chesapeake Drive  
San Diego, California 92123  
858.292.4499 p  
CA License #877824







## CORPORATE PROFILE

- 87 years in Operation
- 800 Employees
- Highly Skilled Craftsmen and Artisans
- Theming Experts
- Early Adopter of 3D Modeling
- Transparent Cost Plus Documentation
- Members of National Fireproofing Contractors Association (NFCA)
- Members of U.S. Green Building Council (USGBC)
- Members of Air Barrier Association of America (ABAA)
- EIFSsmart Contractor
- LEED Accredited Professionals
- Excellent Bonding Capacity
- Excellent Safety Record
- + Strong Balance Sheet and Financial Resources

For 87 years, Raymond has upheld the status as an award-winning union subcontractor. We have the expertise, innovation and capability of producing quality projects with unsurpassed safety. Holding both B and C Classification licenses, we can be a sole source for the general contractor. We offer a complete range of services, from conceptual budgeting to value engineering and engineering design assistance.

*Each member of Raymond's team is responsible for ensuring that Raymond's legendary reputation for quality is carried forward on every project. At Raymond, Quality is one of our core values: **ACHIEVING EXCELLENCE IN ALL THAT WE DO.***

## QUALITY ASSURANCE MANAGEMENT

Raymond has incorporated Quality Assurance as an integrated system of management. Our Quality Assurance Management is one of our core competencies that separate Raymond from our competitors. Raymond's extensive training programs and best practice measures have

guaranteed our clients the quality assurance as well as the highest-level of service that is consciously maintained and managed throughout our organization. Our shared vision of quality extends beyond the highest quality of product installation to a culture of providing quality in all aspects of our business.

The objectives of Raymond's quality control program are managed at each level of our organization and are ultimately controlled with the implementation of project specific quality assurance plans. Our approach to quality begins at the estimating stage and is followed through at each operational step with adherence to Raymond's standard operating procedures. Our processes are standardized throughout the organization.



## A DAILY COMMITMENT TO **SAFETY**

Through each employees' daily commitment to safety and Raymond's robust Safety and Health Program, we strive to be the safest specialty contractor in each of our market areas with zero workplace accidents.

## SAFETY AND HEALTH **PROGRAM**

The Raymond Group Safety and Health Program exceeds all state and federal regulatory requirements and encompasses the following items:

- Establishing robust communications regarding workplace safety and health.
- Conducting safety and health inspections to find and eliminate unsafe working conditions.
- Developing and enforcing workplace safety practices.
- Training employees in good safety and health practices.
- Recognizing and incentivizing employees for working safely.
- Investigating workplace incidents to determine root causes and make corrections to improve our safety program.

## A MESSAGE FROM **THE CEO** **TRAVIS WINSOR**

Safety is a core value at Raymond. Completing the job without incident is a top priority on every one of our projects. Safety is a commitment made at the beginning of every day, throughout the daily operations, and through the end of the shift to ensure that everyone gets home safely.

A key aspect of Raymond's safety program is the need to have diversity, tolerance, inclusion and respect each day on every jobsite. Raymond is made up of a diverse group of individuals focused on a common purpose; to provide for our families; to build unique and exciting projects and to help create better communities where we live. Working together safely makes Raymond a stronger and more dynamic company.





# PROGRAM **HIGHLIGHTS**

- Daily Safety Huddles and Weekly Tailgate Meetings
- Daily Job Hazard Analysis and Pre-task Planning
- Close Call / Near Miss Reporting
- Pre-employment and Post-accident Drug Testing

## **SAFETY LEADERSHIP**

Safety begins at the top. Raymond's Executive leadership is committed to a safe workplace and works daily to ingrain safety into the organization's culture. Safety is the first topic at every management meeting.

With a staff of more than 10 full-time safety professionals, Raymond's Safety Department proactively develops programs to prevent incidents and address job site hazards, in a continued effort to achieve safety excellence.

Integral to Raymond's safety program are the Raymond foremen and superintendents who manage the daily safety performance at our jobsites. These field leaders ensure that all field employees have received required training and are following all safety procedures and policies while doing their jobs. Raymond foremen and superintendents are OSHA 30 certified, as well as trained in first aid, CPR, fall protection, scaffold usage, and more.

## **SAFETY PERFORMANCE**

Raymond's safety record proves:

- Our commitment to the safety and health of our employees
- Our dedication to continually improve our safety performance

## COMPENSATION EXPERIENCE MODIFICATION RATE

	2019	2020	2021	2022	2023
CA	.65%	.60%	.55%	.60%	.65%
NV	.67%	.58%	.54%	.70%	.75%

## SAFETY RECOGNITION

### EXCELLENCE IN SAFETY 2022 / 2019 / 2018

Wall & Ceiling Alliance (WACA)

### EXCELLENCE IN CONSTRUCTION SAFETY 2020 / 2019 / 2018 / 2014 / 2013

The Association of the Wall and Ceiling Industry (AWCI)

### EXCELLENCE IN SAFETY 2022 / 2021 / 2020 / 2018

Western Wall & Ceiling Contractors Association (WWCCA)

### SAFETY AWARD FOR INTERIOR/EXTERIOR DRYWALL CONTRACTOR DIVISION 2018

World Wide Safety



## SAFETY CONTACT

**ED HANLEY**

**DIRECTOR OF SAFETY**

[Edward.Hanley@RaymondGroup.com](mailto:Edward.Hanley@RaymondGroup.com)

As Raymond's Director of Safety, Ed Hanley is responsible for developing and implementing all elements of Raymond's safety program. Hanley has over 25 years of experience in the construction industry, overseeing safety operations. Hanley is a founding member of the Association of the Wall and Ceiling Industry's (AWCI) Safety Directors Forum, having served a three-year term as a co-chair.

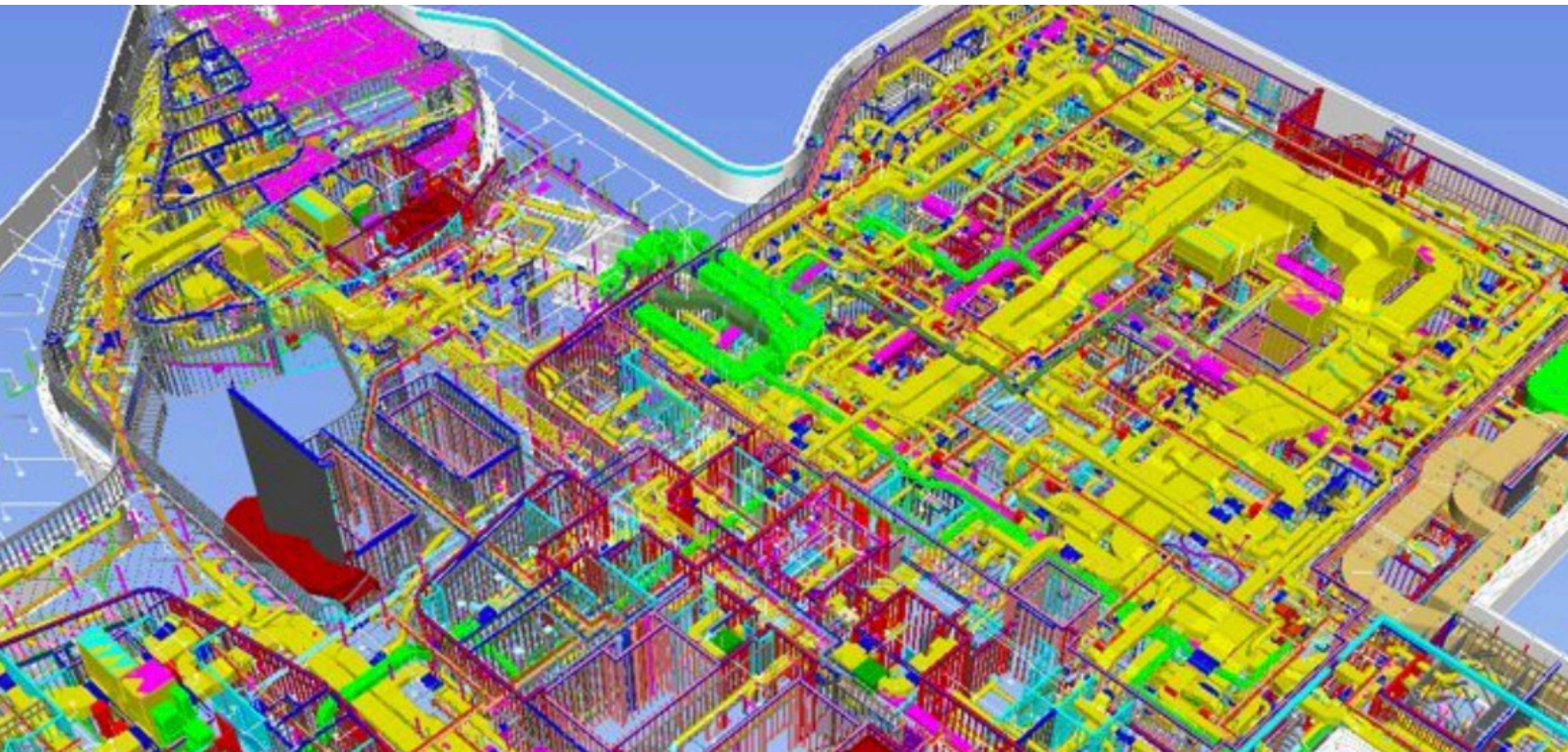


# VIRTUAL DESIGN AND CONSTRUCTION (VDC)

- ✓ **VISUALIZE ADVANCED WALL AND CEILING ASSEMBLIES**
- ✓ **COORDINATE TRADES WITH MINIMAL INTERFERENCE**
- ✓ **INTEGRATE PREFABRICATED WALL ASSEMBLIES WITH MEP COMPONENTS**

Projects are completed easier and quicker when everyone is working with the same vision and using the same information. Raymond achieves this collaboration with the support of our Virtual Design and Construction (VDC) team. Raymond and our VDC team members are experts at facilitating projects through value engineering, providing complex Building Information Modeling (BIM) and proposing less expensive and more constructible alternatives.

The Raymond VDC team thrives on keeping the construction process as smart and simple as possible. By using building information modeling, different stakeholders on a project collaborate by adding, modifying, or updating information in a shared model, resulting in a digital representation of the physical and functional characteristics of the project. This digital representation then becomes a resource that is leveraged to make decisions, even after the building has been completed and occupied.



# VIRTUAL DESIGN AND CONSTRUCTION (VDC)

## BIM SERVICES

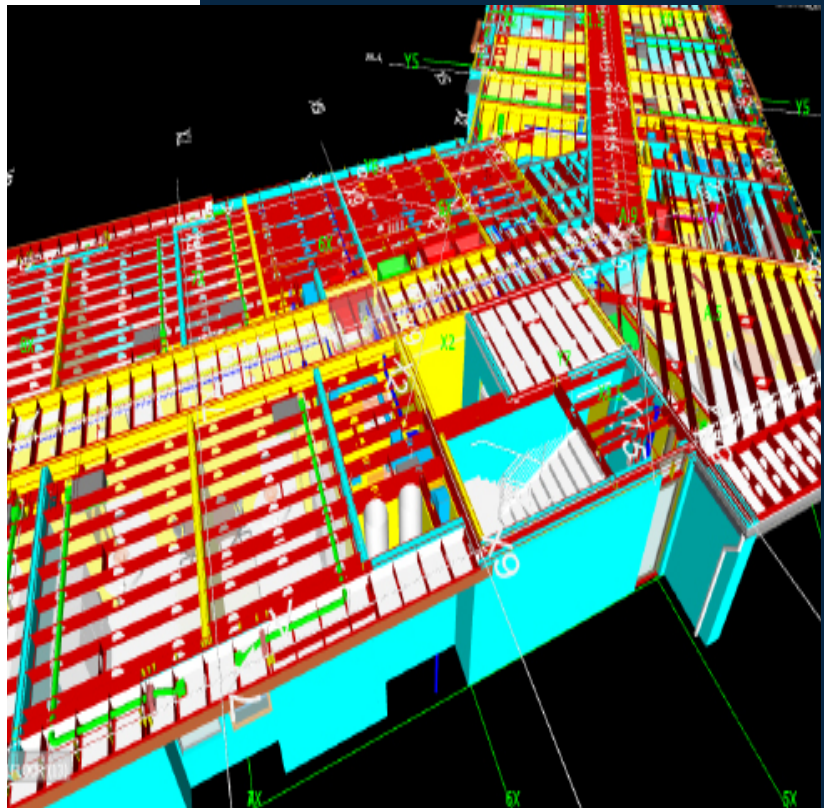
- Shop Drawing Preparation
- Material Quantity Extraction
- Integration of prefabricated wall assemblies with Mechanical, Electrical, and Plumbing components
- Visualization of advanced wall and ceiling assemblies
- Trade Coordination
- Time Scheduling with 4D BIM
- Cost Estimations with 5D BIM
- In house structural engineering advice for quick and accurate solutions for complicated framing methods

## BIM TECHNOLOGY

- Revit Architecture
- Rhino
- Autocad Architecture
- Navisworks Manage
- BIM 360 Glue
- Collaboration for Revit
- BIM 360 Team
- Blue Beam
- Plan Grid
- Autodesk Point Layout
- Robotic QML Layout

## BIM PROCESS GOALS

- Understand Client defined needs
- Clearly communicate project objectives
- Develop project specific processes to fulfill objectives
- Select the best people for roles/responsibilities/fit
- Establish ownership and team commitment to goals
- Cradle to grave approach to design assist: field, management, design
- Project Design Captain supports ongoing project operations
- Best Practice for Model transition to field staff

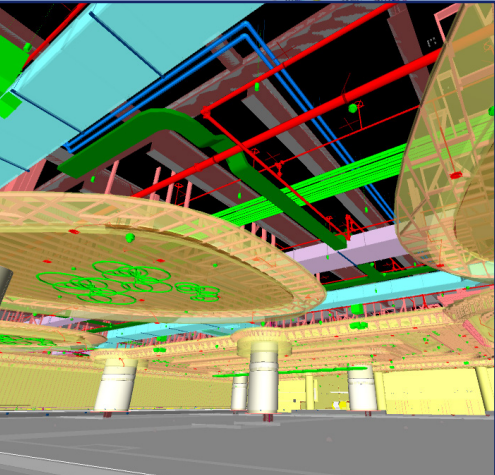
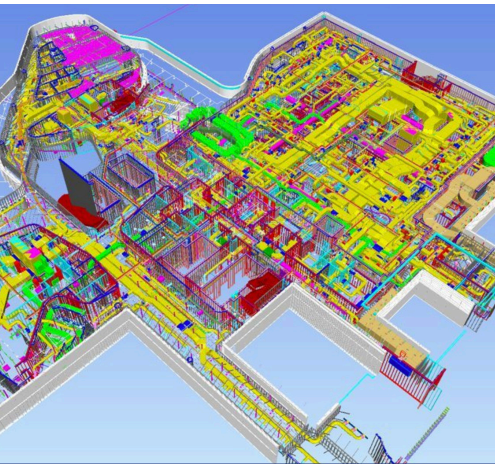




# VIRTUAL DESIGN AND CONSTRUCTION (VDC)

## BIM 3D, 4D & 5D PROJECT EXPERIENCE

JACOBS TOWER MEDICAL CENTER



CIRCA RESORT & CASINO

CSUSB STUDENT HOUSING & DINING  
San Bernardino California  
C.W. Driver

CEDARS SINAI MEDICAL CENTER - AHSP  
Los Angeles, California  
Hathaway Dinwiddie Construction Company

CHASE CENTER OFFICE TOWERS  
San Francisco, California  
Clark Construction

DISNEY'S LITTLE MERMAID ATTRACTION  
Anaheim, California  
Walt Disney Imagineering

UCSD JACOBS TOWER MEDICAL CENTER  
La Jolla, California  
Kitchell Construction

JW MARRIOTT  
Anaheim, California  
W.E. O'Neil

LA STADIUM & ENTERTAINMENT DISTRICT  
Inglewood, California  
Turner | AECOM Hunt

UCSF MINNESOTA ST. HOUSING  
San Francisco, California  
Skanska

WESTIN  
Anaheim, California  
KCS West

WILSHIRE GRAND CENTER  
Los Angeles, California  
Turner Construction

# PREFABRICATION STRATEGIES

Raymond utilizes prefabrication strategies on many projects to increase production and meet tight schedules, without compromising quality. Raymond offers several opportunities for prefabrication including:

- Exterior Panel Technology offering high quality prefabricated wall panel systems that maximize project schedules and increase safety.
- Drywall Milling Machines to produce high quality and precise gypsum cutouts, with the ability for mass production.
- Complete Roll Formed Framing Systems for a fast, cost-effective solution.





# PREFABRICATED EXTERIOR PANEL TECHNOLOGY

Raymond combines the latest technology and proven products to deliver the most energy efficient, architecturally versatile exteriors in the construction industry today, employing a process that saves time, adds value and improves quality.

**SPEED.** Greatly reduce the time of building envelope installation and make the most of your construction calendar.

- Fast-Track, Systemized Panel Manufacturing
- Efficiencies Compress the Construction Schedule
- Indoor Production Means No Weather Delays
- Site Prep and Panel Construction Can Occur Simultaneously
- Reduced Multi-Trade Vendor Coordination
- Faster Installation Due to Prefab Panelization



**VALUE.** Reduce the cost of your project by eliminating scaffolding and other complications of working at high elevations.

- Lightweight Panels Lower Structural Requirements
- Smaller Footings / Foundations
- Reduced Jobsite Labor & Crew Sizes
- No Jobsite Scaffolding Required
- Decreased Volume of Project Concrete
- Reduced Drywall Furring, Boxing and Strapping

**QUALITY.** Panels are produced in temperature-controlled factories, in full compliance with codes for testing, building and energy efficiency.

- Prefab Panels Have ISO-Engineered Components
- Quality-Controlled Workmanship
- Strict Adherence to Temp/Humidity Guidelines
- Extensive Architectural and Finish Options
- Superior Fire, Acoustical and Thermal Performance
- Superior Long Term Durability



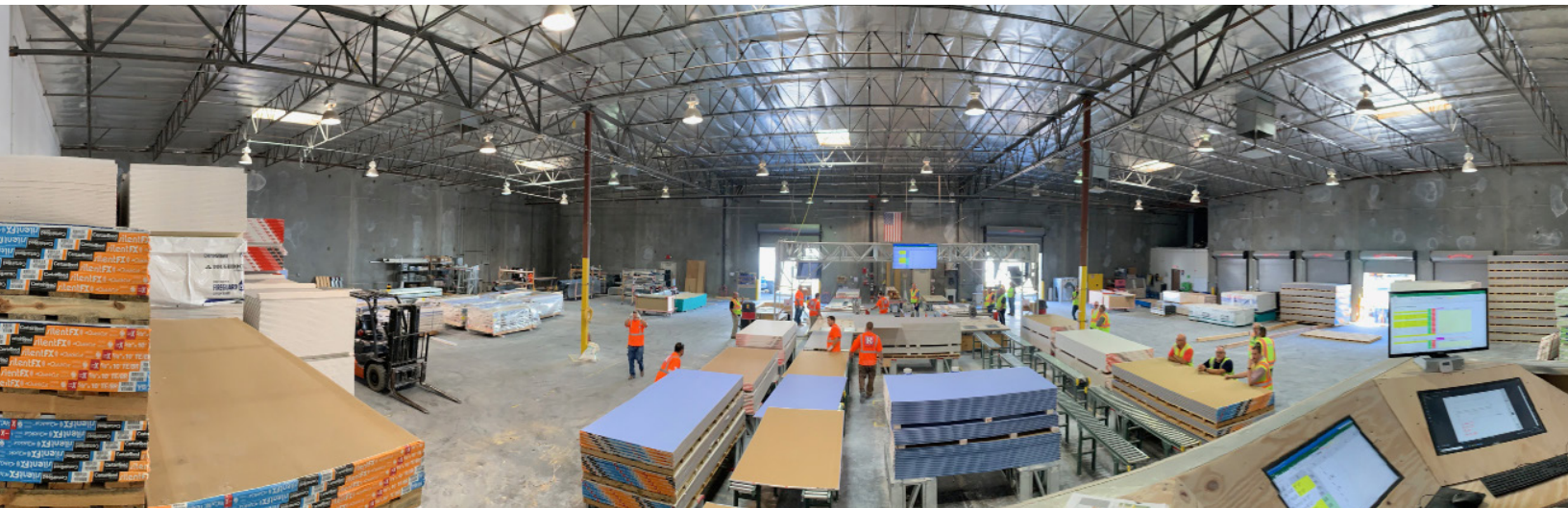
# DRYWALL MILLING MACHINE

The Raymond Group is the owner of five (5) drywall milling machines, utilizing them in each office location.

This revolutionary manufacturing system makes creating intricate shapes and assemblies from drywall much more affordable and cost effective. Originally created for the need of architecturally demanding projects, today The Raymond Group uses these strategically located machines to help provide a safer, more timely, cost effective, less wasteful product for each of our projects where repetition and/or high design is required.

Key capabilities and benefits:

- + FABRICATE DRYWALL COMPONENTS OFF SITE SUCH AS SOFFITS, CORNERS AND SPECIALTY ITEMS.**
- + REDUCE MANPOWER ON THE PROJECT BY MOVING THE WORK OFF SITE.**
- + INCREASE THE QUALITY OF OUR INSTALLED DRYWALL.**
- + REMOVE A DUSTY AND TIME-CONSUMING OPERATION FROM THE PROCESS BY REDUCING CORNER BEAD AND TAPING.**





# FRAMING SYSTEMS

An end-to-end design and build solution, prefabricated framing systems are designed to suit a wide range of projects that demand the rapid delivery of quality buildings. With the technology to manufacture complete roll formed framing systems, Raymond is able to complete projects more quickly, while minimizing waste and clutter.

Rapid Steel Framing Systems to produce cost-effective, lightweight steel framing components quickly and efficiently.

- + **HIGHLY VERSATILE**
- + **INCREASED PRODUCTION SPEED**
- + **GREATER FLEXIBILITY**
- + **INCREASED RELIABILITY**
- + **HEAVY DUTY MANUFACTURING**
- + **HIGH VOLUME PRODUCTION**



# PROJECT EXPERIENCE

CIRCA RESORT & CASINO



RESORTS WORLD

**"[RAYMOND] MAKES A PROJECT VERY EASY TO MANAGE, AND IS VERY RESPONSIVE."** - TREVOR HAMMOND, MONTE CARLO HIGH RISE

## CASINO/GAMING

### AGUA CALIENTE

Palm Springs, California  
The PENTA Building Group

### CIRCA RESORT & CASINO

Las Vegas, Nevada  
McCarthy Building Companies, Inc.

### COSMOPOLITAN REMODEL

Las Vegas, Nevada  
Nevada Property LLC

### GRATON RESORT

Rohnert Park, California  
The PENTA Building Group

### HARRAH'S RESORT & CASINO

Valley Center, California  
W.E. O'Neil

### MONTE CARLO HIGH RISE

Las Vegas, Nevada  
MGM Resorts International

### RESORTS WORLD

Las Vegas, California  
W.A. Richardson

### SAN MANUEL RESORT & CASINO

Highland, California  
The PENTA Building Group

### SLS RESORT & CASINO

Las Vegas, Nevada  
The PENTA Building Group

### WYNN EXPANSION

Las Vegas, Nevada  
The PENTA Building Group



# PROJECT EXPERIENCE

LMU LIFE SCIENCES



SOUTHWESTERN COLLEGE PERFORMING ARTS

## EDUCATION

**BIOLA SCIENCE CENTER**  
La Mirada, California  
C.W. Driver

**CSUDH COLLEGE OF EXTENDED STUDIES**  
Carson, California  
C.W. Driver

**CSULA BIOSPACE**  
Long Beach, California  
Sundt Construction

**CSULB EXTENDED LEARNING**  
Long Beach, California  
Matt Construction

**CSUSB STUDENT HOUSING**  
San Bernardino, California  
C.W. Driver

**LMU LIFE SCIENCES**  
Los Angeles, California  
C.W. Driver

**KATHLEEN MACDONALD HIGH SCHOOL**  
San Jose, California  
Swinerton Builders

**PALOMAR COLLEGE**  
San Marcos, California  
California Sheet Metal

**SOUTHWESTERN COLLEGE  
PERFORMING ARTS**  
Chula Vista, California  
Rudolph & Sletten

**UNLV MEDICAL EDUCATION BUILDING**  
Las Vegas, Nevada  
MJ Dean Construction

# PROJECT EXPERIENCE

## ENTERTAINMENT/ ATTRACTION

T-MOBILE ARENA



SOFI STADIUM

**“** RAYMOND IS ONE OF MY TOP CONTRACTORS THAT I CAN RELY ON TO HELP FIGURE OUT HOW TO GET THE JOB DONE. THEY ARE MUCH MORE A PARTNER THAN A SUBCONTRACTOR.” - RICK SOLOMON, CLARK CONSTRUCTION, GUARDIANS OF THE GALAXY

### ACRISURE ARENA

Thousand Palms, California  
AECOM Hunt

### CHASE CENTER TOWERS

San Francisco, California  
Clark Construction

### SOFI STADIUM & YOUTUBE THEATER

Inglewood, California  
Turner AECOM-Hunt JV

### DISNEY PIXAR PIER

Anaheim, California  
Mortenson | Clark JV

### DISNEY GUARDIANS OF THE GALAXY

Anaheim, California  
Clark Construction

### DISNEY GOLDEN STATE EXPANSION

Anaheim, California  
Clark Construction

### DODGER STADIUM RENOVATION

Los Angeles, California  
Hunt Construction

### LA FORUM RENOVATION

Inglewood, California  
Clark Construction

### NBC UNIVERSAL AREA 51 SOUND STAGE

Universal City, California  
Matt Construction

### T-MOBILE ARENA

Las Vegas, Nevada  
The PENTA Building Group

# PROJECT EXPERIENCE

## HEALTHCARE

JACOBS TOWER MEDICAL CENTER



### CALIFORNIA HEALTH CARE FACILITY

Stockton, California  
Clark/McCarthy Joint Venture

### CEDARS SINAI ADVANCED HEALTH SCIENCES PAVILION

Los Angeles, California  
Hathaway Dinwiddie Construction Company

### CENTENNIAL HILLS HOSPITAL

Las Vegas, Nevada  
SR Construction

### HIGHLAND HOSPITAL

Oakland, California  
Clark Construction

### JACOBS TOWER MEDICAL CENTER

La Jolla, California  
Kitchell Construction Company

### RADY CHILDREN'S EOB

San Diego, California  
McCarthy Building Companies, Inc.

### SAN FRANCISCO GENERAL HOSPITAL

San Francisco, California  
Enclos Corporation

### SANTA CLARA VALLEY MEDICAL CENTER

San Jose, California  
Turner Construction/Pacific Erectors

### UCSD THORNTON HOSPITAL KITCHEN

La Jolla, California  
Kitchell Construction Company



CENTENNIAL HILLS HOSPITAL



# PROJECT EXPERIENCE

WILSHIRE GRAND CENTER



WESTIN ANAHEIM

## HOSPITALITY

### ANAHEIM CONVENTION CENTER

Anaheim, California

Hensel Phelps Construction Company

### THE GRAND LA

Los Angeles, California

AECOM/Tishman

### GREAT WOLF LODGE & WATER PARK

Garden Grove, California

Turner Construction

### JACKSON RANCHERIA

Jackson, California

Jackson Rancheria Hotel

### JW MARRIOTT

Anaheim, California

W.E. O'Neil

### LEGACY INTERNATIONAL CENTER

San Diego, California

Clark Construction

### RIVERSIDE CONVENTION CENTER

Riverside, California

Turner Construction

### SHERATON

Palo Alto, California

Charles Pankow Builders, LTD.

### WESTIN

Anaheim, California

KCS West

### WILSHIRE GRAND CENTER

Los Angeles, California

Turner Construction

# PROJECT EXPERIENCE

## INSTITUTIONAL/CIVIC

DGS NATURAL RESOURCES HQ



CALIFORNIA HEALTH CARE FACILITY

### BRITISH CONSULATE

Los Angeles, California

Unispace

### BEVERLY HILLS CIVIC CENTER

Beverly Hills, California

Hathaway Dinwiddie Construction Co.

### CHSF STOCKTON

Stockton, California

Clark/McCarthy, Joint Venture

### DGS NATURAL RESOURCES

#### HEADQUARTERS

Sacramento, California

Turner Construction

### KEARNY MESA TRAFFIC COURT

San Diego, California

Rudolph & Sletten

### MAPLE STREET CORRECTIONAL FACILITY

San Francisco, California

Sundt/Layton Joint Venture

### MOFFETT HANGAR 2 & 3

Mountain View, California

Turner Construction

### NORTHROP GRUMMAN

Palmdale, California

W.E. O'Neil

### NLV CITY HALL

North Las Vegas, Nevada

Whiting-Turner Construction

# PROJECT EXPERIENCE

FACEBOOK WEST CAMPUS



PLAYA VISTA

**"** MY GREATEST CONCERN AT THIS POINT WOULD BE WORKING WITH SUBCONTRACTORS THAT DON'T HAVE THE SAME DESIRE TO WORK AT THE LEVEL OF EXPECTATION I'VE COME TO SEE ON A DAILY BASIS WORKING WITH RAYMOND." - PATRICK TOTTEN, DOME CONSTRUCTION, 246 1ST ST.

## OFFICE BUILDING/ CORE & SHELL

### CIM 246 FIRST STREET ADDITION

San Francisco, California

Dome Construction

### DELOITTE

Costa Mesa, California

Clune Construction

### FACEBOOK WINDSURFER

Burlingame, California

Rudolph & Sletten

### FACEBOOK WINDSURFER

Menlo Park, California

Level 10 Construction

### GOOGLE PACIFIC SHORES

Redwood City, California

DPR Construction

### KPMG

San Diego, California

Clune Construction

### PLAYA VISTA PARCEL 2

Los Angeles, California

Hathaway Dinwiddie

### UBER

San Francisco, California

Truebeck Construction

### VIASAT BUILDING 13

Carlsbad, California

Whiting-Turner

### WEWORK HEADQUARTERS

San Francisco, California

Dome Construction



# PROJECT EXPERIENCE

## PARKING STRUCTURES

DEL MAR PARKING



DEL MAR PHASE 1  
PARKING STRUCTURE  
San Diego, California  
ARB, Inc.

KAISER PASADENA PARKING  
Pasadena, California  
ARB, Inc.

LA JOLLA COMMONS PARKING  
STRUCTURE  
La Jolla, California  
ARB, Inc.

ONE PASEO PARKING  
San Diego, California  
Swinerton Builders

PACIFIC CITY PARKING  
Huntington Beach, California  
C.W. Driver

PALA PARKING  
Pala, California  
Bomel Construction

STANFORD PARKING  
Palo Alto, California  
Clark/McCarthy, Joint Venture

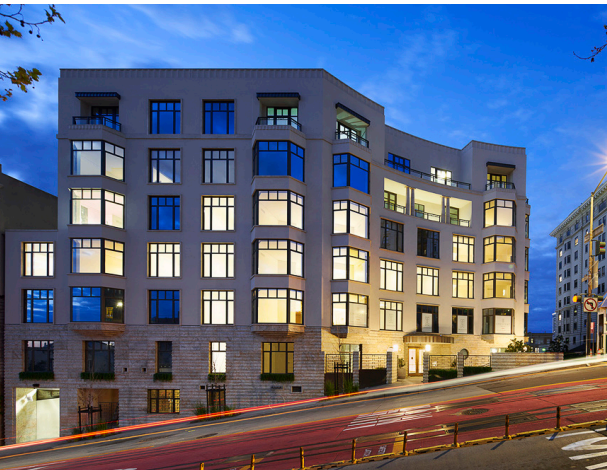
UNIVERSITY OF LA VERNE  
PARKING  
La Verne, California  
Bomel Construction



KAISER PASADENA PARKING

# PROJECT EXPERIENCE

875 CALIFORNIA ST.



UC DAVIS WEST VILLAGE HOUSING

## RESIDENTIAL/MULTI-FAMILY HOUSING

1066 MARKET STREET  
San Francisco, California  
Swinerton Builders

1321 MISSION  
San Francisco, California  
Charles Pankow Builders

505 BRANNAN STREET  
San Francisco, California  
Swinerton Builders

51ST & BROADWAY  
Oakland, California  
Swinerton Builders

875 CALIFORNIA STREET  
San Francisco, California  
Swinerton Builders

LANDMARK TOWER II  
Los Angeles, California  
MATT Construction

PARK TOWER  
San Francisco, California  
Clark Construction

TEN50 GRAND  
Los Angeles, California  
Lendlease

UC DAVIS WEST VILLAGE HOUSING  
Davis, California  
CBG Building Co.

VARIEL SENIOR LIVING  
Woodland Hills, California  
W.E. O'Neil

# PROJECT EXPERIENCE

2ND & PCH



COLLECTION AT UTC

**"** RAYMOND HAS BEEN AN EXCELLENT PARTNER FOR US ON OUR LARGE SCALE, OPEN FOR BUSINESS, RETAIL PROJECTS. THESE ARE DELICATE, YET FAST PACED ASSIGNMENTS, AND AS AN OUT OF TOWN [CONTRACTOR], WE COULD NOT BE HAPPIER WITH THE SUPPORT THE RAYMOND TEAM HAS PROVIDED."  
- AARON CLAYPOOL, PACIFIC NATIONAL GROUP

## RETAIL

### 2ND & PCH

Long Beach, California  
W.E. O'Neil

### BURBANK TOWN CENTER

Burbank, California  
W.E. O'Neil

### COLLECTION AT UTC

La Jolla, California  
The Whiting-Turner Contracting Co.

### MACY'S GEARY & UNION SQUARE

San Francisco, California  
Swinerton Builders

### NORDSTROM UTC

La Jolla, California  
Pacific National Group

### ONE PASEO

San Diego, California  
Whiting-Turner

### PACIFIC CITY

Huntington Beach, California  
C.W. Driver

### SHOPPES AT CARLSBAD

Carlsbad, California  
Whiting-Turner

### WESTFIELD UTC

La Jolla, California  
Westfield DDC, LLC

### WYNN PLAZA

Las Vegas, Nevada  
The PENTA Building Group



# PROJECT EXPERIENCE

## TENANT IMPROVEMENT

TIFFANY & CO.



EDWARDS LIFE SCIENCES

### COOLEY

San Diego, California  
Burger Construction

### EDWARDS LIFE SCIENCES

Irvine, California  
Clune Construction

### GETTY VILLA COLLECTION

Pacific Palisades, California  
Matt Construction

### HULU HEADQUARTERS

Santa Monica, California  
Clune Construction

### KPMG

San Diego, California  
Clune Construction

### LOUIS VUITTON SOUTH COAST PLAZA

Costa Mesa/La Jolla, California  
Hurst & Siebert, Inc.

### SAN DIEGO ZOO

San Diego, California  
Zoological Society

### SHEPPARD MULLIN

Costa Mesa, California  
Clune Construction

### SIRIUS XM

Los Angeles, California  
Clune Construction

### TIFFANY & CO.

Costa Mesa, California  
Hurst & Siebert, Inc.

# PROJECT EXPERIENCE

## TRANSPORTATION

SAN FRANCISCO AIRPORT TERMINAL 2



SAN JOSE AIRPORT TERMINAL B

### AMERICAN AIRLINES AT SFO

San Francisco, California

Turner Construction

### CONRAC GARAGE

San Jose, California

Hensel Phelps Construction

### LA METRO

Los Angeles, California

Perez Construction

### MINETA SAN JOSE INTERNATIONAL AIRPORT - TERMINAL B CONCOURSE

San Jose, California

Clark Construction

### QANTAS FIRST CLASS LOUNGE

Los Angeles, California

Turner Construction

### SAN FRANCISCO INTERNATIONAL AIRPORT CONTROL TOWER

San Francisco, California

Pacific Erectors

### SAN FRANCISCO INTERNATIONAL AIRPORT - TERMINAL 2 BOARDING AREA D RENOVATION

San Francisco, California

Turner Construction