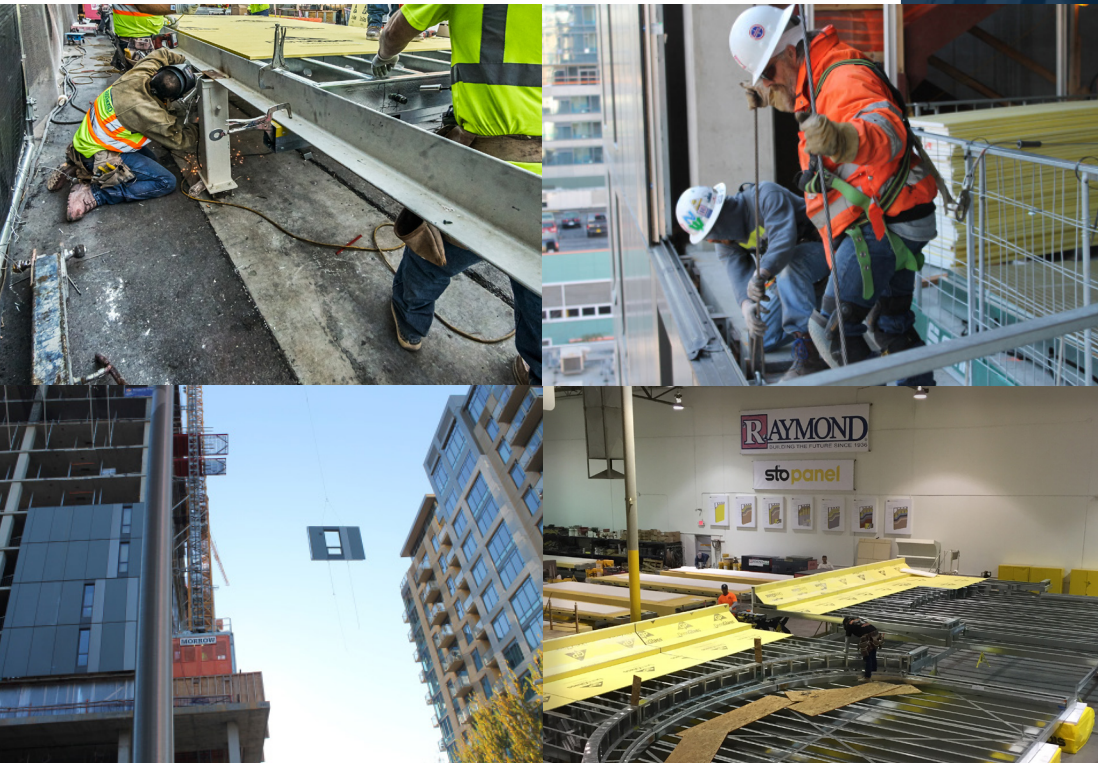


# THE **RAYMOND GROUP**

## STATEMENT OF QUALIFICATIONS

### EXTERIOR SYSTEMS



# TABLE OF CONTENTS

## PANEL PREFABRICATION

- EXTERIOR PANEL TECHNOLOGY
- FRAMING SYSTEMS

## PROJECT EXPERIENCE

- METAL PANEL SYSTEMS
- LOAD BEARING FRAMING SYSTEMS
- EIFS
- RAIN SCREEN SYSTEMS
- FIBERGLASS REINFORCED PANELS

# THE RAYMOND GROUP

4589 Pacheco Blvd.  
Martinez, California 94553  
925.680.8300 p  
925.827.1436 f  
CA License #307786

520 West Walnut Avenue  
Orange, California 92868  
714.771.7670 p  
714.633.1558 f  
CA License #243645

6435 Valley View Boulevard, Suite H  
Las Vegas, Nevada 89118  
702.891.8875 p  
702.891.8876 f  
NV License #35448

9560 Chesapeake Drive  
San Diego, California 92123  
858.292.4499 p  
858.292.9144 f  
CA License #877824





# EXTERIOR PANEL TECHNOLOGY

Raymond combines the latest technology and proven products to deliver the most energy efficient, architecturally versatile exteriors in the construction industry today, employing a process that saves time, adds value and improves quality.

**SPEED.** Greatly reduce the time of building envelope installation and make the most of your construction calendar.

- Fast-Track, Systemized Panel Manufacturing
- Efficiencies Compress the Construction Schedule
- Site Prep and Panel Construction Can Occur Simultaneously
- Reduced Multi-Trade Vendor Coordination
- Faster Installation Due to Prefab Panelization

**VALUE.** Reduce the cost of your project by eliminating scaffolding and other complications of working at high elevations.

- Lightweight Panels Lower Structural Requirements
- Smaller Footings / Foundations
- Reduced Jobsite Labor & Crew Sizes
- No Jobsite Scaffolding Required
- Decreased Volume of Project Concrete
- Reduced Drywall Furring, Boxing and Strapping

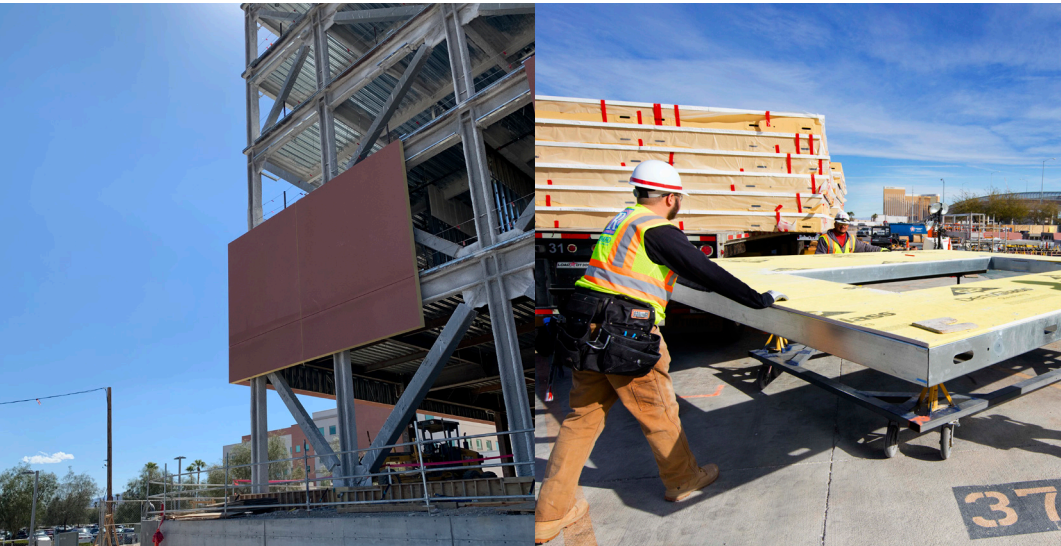
**QUALITY.** Panels are produced in temperature-controlled factories, in full compliance with codes for testing, building and energy efficiency.

- Panels Have ISO-Engineered Components
- Quality-Controlled Workmanship
- Strict Adherence to Temp/Humidity Guidelines
- Extensive Architectural and Finish Options
- Superior Fire, Acoustical and Thermal Performance
- Superior Long Term Durability



# EXTERIOR PANEL PROJECT

## CENTENNIAL HILLS HOSPITAL LAS VEGAS, NEVADA



**Owner**  
UHS

**General Contractor**  
SR Construction

**Architect**  
HDR Architecture

**Engineer**  
Lochsa

**Program (Building Type)**  
New Patient Room Tower

**Onsite Assembly Date**  
Spring 2020

### PROJECT OVERVIEW

The Centennial Hills Hospital project, located in Northwest Las Vegas, was an expansion to the existing hospital. The new, five-story patient tower broke ground in 2019 and was completed in stages, with Phase One opening in the fall of 2020. The expansion included a Neonatal Intensive Care Unit; Intensive Care Unit; Intermediate Unit and Medical Surgical Units; increased capacity to the inpatient pharmacy, surgical services, and the post-anesthesia care unit; and increased the total bed count from 262 to 390.

Contracted by SR Construction, Raymond completed framing, drywall, tape, paint, wallcovering, and plaster. Exterior Panel Technology was used to prefabricate insulated metal wall panels. The prefabrication process began with the use of FRAMECAD to produce lightweight steel framing components that were constructed into panels at an offsite location. Exterior Insulation and Finish Systems (EIFS) was applied, and panels were loaded onto trucks for

delivery to the jobsite. Loading of the panels was methodical with panels set in a strategic order, allowing the offloading and installation processes to run smoothly.

The Centennial Hills Hospital project is a great example of the benefits of prefabricated and insulated metal wall panels. The project experienced a reduction in manpower on site, a cleaner jobsite, and a compressed schedule that allowed hospital beds to be available four months earlier than anticipated.



# EXTERIOR PANEL PROJECT

## WYNN RETAIL PLAZA LAS VEGAS, NEVADA

**Owner**

Wynn Las Vegas

**General Contractor**

The PENTA Building Group

**Architect**

Butler Ashworth

**Engineer**

Lochsa

**Program (Building Type)**

Expansion, New Construction

**Onsite Assembly Date**

Spring 2016

### PROJECT OVERVIEW

The Wynn Retail Plaza project was a 70,000 square foot expansion to the existing Wynn Resort. The new high end space consists of two levels of retail shops, cafes, and restaurants. Raymond's scope of work on the project included framing, drywall, EIFS, GFRC, GFRG, FRP, paint, wallcovering, insulation, and fire-stopping.

Approximately 57,000 square feet of an Exterior Panel System was utilized.

With a compressed schedule due to material delays as well as site constraints, prefabricating panels offsite made it possible to complete the project on time and budget.





# EXTERIOR PANEL **PROJECT**

## **THE CROMWELL** LAS VEGAS, NEVADA



**Owner**  
Caesars Entertainment Corporation

**General Contractor**  
W.A. Richardson

**Architect**  
Leo A. Daly

**Engineer**  
Lochsa

**Program (Building Type)**  
Replace Exterior Skin

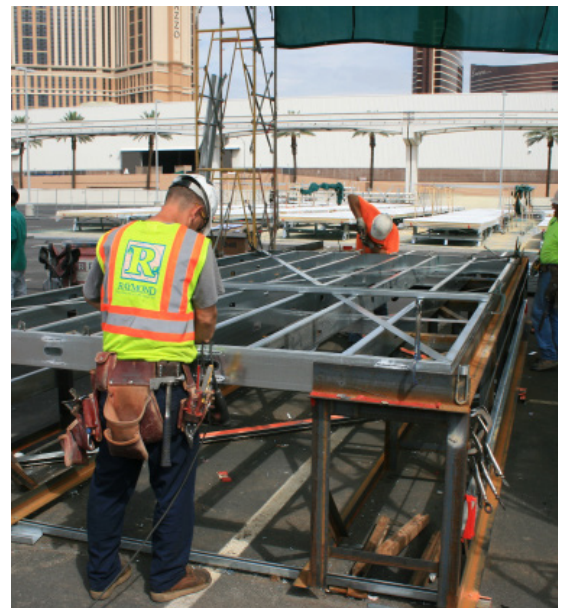
**Onsite Assembly Date**  
Spring 2014

### **PROJECT OVERVIEW**

The project was a remodel and addition to an old (circa 1977) hotel and casino in Las Vegas. The exterior scope consisted of in-place replacement and renovation of the existing structure and approximately 40,000 SF of exterior panels on the new structure.

The project required a non-drainage insulated exterior system. Over 300 single-floor panels were developed. A combination of tower cranes and hydro cranes were used for the nighttime erection.

For years, insulated finish systems have been the go-to exterior enclosure for most projects along the Las Vegas strip due to their low cost and schedule effectiveness. Given the committed turnover date for this project and late steel, panelizing was the only and best solution.



# FRAMING SYSTEMS

An end-to-end design and build solution, prefabricated framing systems are designed to suit a wide range of projects that demand the rapid delivery of quality buildings. With the technology to manufacture complete roll formed framing systems, Raymond is able to complete projects more quickly, while minimizing waste and clutter.

Rapid Steel Framing Systems to produce cost-effective, lightweight steel framing components quickly and efficiently.

- + HIGHLY VERSATILE
- + INCREASED PRODUCTION SPEED
- + GREATER FLEXIBILITY
- + INCREASED RELIABILITY
- + HEAVY DUTY MANUFACTURING
- + HIGH VOLUME PRODUCTION





# PROJECT EXPERIENCE

CORNISH STUDENT HOUSING



RESORTS WORLD

## METAL PANEL SYSTEMS

### CHASE CENTER TOWERS

*Prefabricated Framing System*  
San Francisco, California  
Mortenson Clark, A Joint Venture

### CORNISH SCHOOL OF THE ARTS STUDENT HOUSING

*Prefabricated Aluminum Painted Panels*  
Las Vegas, Nevada  
Howard S. Wright

### COSMOPOLITAN WEST REMODEL

*Prefabricated Framing System*  
Las Vegas, Nevada  
Nevada Property LLC

### RESORTS WORLD

*Prefabricated Framing System*  
Las Vegas, Nevada  
W.A Richardson Builders

### THOMAS JEFFERSON SCHOOL OF LAW

*Corrugated Metal Panels*  
San Diego, California  
Bovis Lend Lease, Inc.

### TRINITY PLACE PHASE 3

*Prefabricated Framing System*  
San Francisco, California  
Swinerton Builders

### USO RELOCATION

*Metal Panels*  
San Diego, California  
Kiewit-Sundt, A Joint Venture

### VERITAS CAMPUS II

*Metal Panels*  
Seattle, Washington  
Howard S. Wright



# PROJECT EXPERIENCE

CSUSB



VARIEL

## LOAD BEARING PANEL SYSTEMS

### CSUSB STUDENT HOUSING & DINING

*Prefabricated Load Bearing Panel System*

San Bernardino, California

C.W. Driver

### CAMPBELL HALL

North Hollywood, California

Matt Construction

### CARLSBAD HIGH SCHOOL

San Diego, California

McCarthy Building Companies

### DODGER STADIUM CONCESSIONS

Los Angeles, California

Hunt Construction Group

### RAYTHEON

El Segundo, California

Pacific National Group

### SAINT MARY'S COLLEGE RECREATION CENTER

Moraga, California

Overaa Construction

### VARIEL SENIOR LIVING FACILITY

Woodland Hills, California

W.E. O'Neil

### VETERAN'S VILLAGE CRISIS CENTER

Las Vegas, Nevada

Wynn Design & Development

# PROJECT EXPERIENCE

THE CROMWELL



T-MOBILE ARENA

## EXTERIOR INSULATION AND FINISHING SYSTEMS

### CAESARS PALACE SPA TOWER

*EIFS Panel System*  
Las Vegas, Nevada  
Perini Building Company

### CENTENNIAL HILLS HOSPITAL

*EIFS & Exterior Prefabricated Panel System*  
Las Vegas, Nevada  
SR Construction

### THE CROMWELL

*EIFS & Exterior Prefabricated Panel System*  
Las Vegas, Nevada  
W.A. Richardson Builders, LLC

### HOLLYWOOD & HIGHLAND RENAISSANCE HOTEL

*EIFS Panel System*  
Hollywood, California  
Matt Construction

### HUNTINGTON MEMORIAL HOSPITAL

*EIFS*  
McCarthy Building Companies, Inc.  
Pasadena, California

### MGM RESIDENCES

*EIFS Panel System*  
Las Vegas, Nevada  
Marnell Corrao Associates

### T-MOBILE ARENA

*EIFS Panel System*  
Las Vegas, Nevada  
The PENTA Building Group

### WORLD MARKET CENTER

*EIFS Panel System*  
Las Vegas, Nevada  
The PENTA Building Group



# PROJECT EXPERIENCE

## RAIN SCREEN SYSTEMS

1900 1ST AVENUE



### 1900 1ST AVENUE

*Prefabricated Swisspearl Panels*  
Seattle, Washington  
Turner Construction

### 2121 PARK PLACE

*Swisspearl*  
Santa Monica, California  
Pankow

### BLAIR IB MAGNET MIDDLE SCHOOL

*Swisspearl*  
Pasadena, California  
C.W. Driver

### CALTRANS DISTRICT HEADQUARTERS

*Swisspearl*  
Los Angeles, California  
Clark Construction

### CAMPBELL HALL

*Minerit*  
North Hollywood, California  
Matt Construction

### CATALINA MEDIA

*Minerit*  
Burbank, California  
Krismar Construction

### CHILDREN'S MUSEUM LOS ANGELES

*Minerit*  
Los Angeles, California  
Matt Construction

### CORESITE

*Terracotta Rain Screen System*  
San Francisco, California  
Matt Construction



CORESITE

# PROJECT EXPERIENCE

## RAIN SCREEN SYSTEMS

DISNEY GC3



LMU SCIENCE BUILDING

### DISNEY GC3

*Terracotta Rain Screen System*  
Glendale, California  
Hathaway Dinwiddie Construction  
Company

### FOOTHILL COLLEGE - PHYSICAL SCIENCES & ENGINEERING CENTER

*Terracotta Rain Screen System*  
Los Altos Hills, California  
Hathaway Dinwiddie Construction  
Company

### LAUSD #22

*Swisspearl*  
Los Angeles, California  
Hathaway Dinwiddie Construction  
Company

### LMU SCIENCE BUILDING

*Swisspearl*  
Los Angeles, California  
C.W. Driver

### MISSION VIEJO MALL

*Green Screen System*  
Mission Viejo, California  
Debartolo Properties Management, Inc.

### PLAYA VISTA B

*Swisspearl*  
Los Angeles, California  
Morley Builders

### THE RESERVE

*Swisspearl & Parklex Facades*  
Los Angeles, California  
Krismar Construction



# PROJECT EXPERIENCE

## RAIN SCREEN SYSTEMS

SADDLEBACK COLLEGE



### ROWLEY HILTON EXTENDED STAY

*Prefabricated Swisspearl Panels*

Seattle, Washington

GLY

### SADDLEBACK COLLEGE

*Hardie Nuon Exterior Rain Screen System*

Irvine, California

C.W. Driver

### SAN YSIDRO LAND PORT BRIDGE

*Swisspearl*

San Diego, California

Clark Construction

### SANTA MONICA PLACE

*Terracotta Rain Screen System*

Santa Monica, California

Whiting-Turner Contracting Company

### SFJAZZ CENTER

*Swisspearl*

San Francisco, California

Hathaway Dinwiddie Construction

Company

### USC BRAIN & CREATIVITY INSTITUTE

*Swisspearl*

Los Angeles, California

Hathaway Dinwiddie Construction

Company

WALLIS ANNENBERG PERFORMING ARTS



### WALLIS ANNENBERG PERFORMING ARTS

*Swisspearl*

Los Angeles, California

Matt Construction

# PROJECT EXPERIENCE

DISNEY'S LITTLE MERMAID



## FIBERGLASS REINFORCED EXTERIOR PANELS

### DISNEY'S LITTLE MERMAID

*Ride Entry Wall Protection Panels*  
Anaheim, California  
Walt Disney Imagineering

### DISNEY'S PARADISE PIER

*Prefabricated Columns & Trellises*  
Anaheim, California  
Walt Disney Imagineering

### ROUTE 66 PEDESTRIAN BRIDGE

*Prefabricated Decorative Fencing Panels*  
Rancho Cucamonga, California  
Penwal Industries, Inc.

### UCI HEWITT HALL LABORATORY

*Prefabricated Wall & Ceiling Panels*  
Irvine, California  
Hensel Phelps

### VERIZON PADRE GOLDS TOWER ROOFTOP SATELLITE DISH

*Renewal-Cell Solutions Panel System*  
San Diego, California  
Burge Corporation

### WESTMINSTER POLICE DEPARTMENT PARKING STRUCTURE ROOFTOP SATELLITE DISH

*Renewal-Cell Solutions Panel System*  
Westminster, California  
McCarthy Building Companies, Inc.



ROUTE 66 PEDESTRIAN BRIDGE