

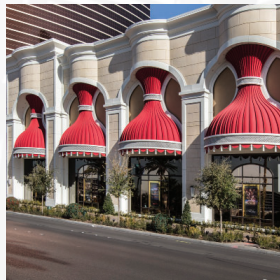


# GFRG/GFRC/FRP

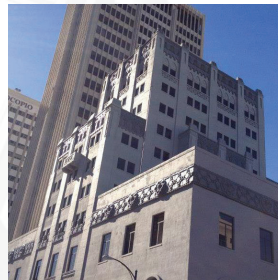
RAYMOND SPECIALIZES IN GLASS FIBER-REINFORCED GYPSUM (GFRG), GLASS FIBER-REINFORCED CONCRETE (GFRC), AND FIBER-REINFORCED PLASTIC (FRP). Raymond's design and installation of GFRG/GFRC/FRP give the professional look architects and owners most desire. With years of experience with theming and other decorative elements, Raymond's creativity and coordination with its customers has led to countless GFRG/GFRC/FRP products and installations that meet and often surpass the initial vision.



**SOFI STADIUM**  
*AWCI Excellence in Construction Quality*



**WYNN RETAIL EXPANSION**



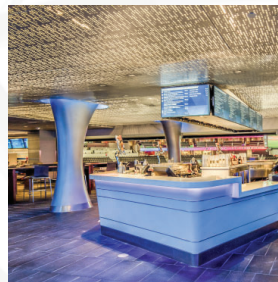
**WORLD TRADE CENTER (CONNECTIONS HOUSING)**



**MINGEI INTERNATIONAL MUSEUM**  
*WWCCA Project of the Year*



**NBC UNIVERSAL AREA 51**  
*Parex USA Commercial Project of the Year*



**T-MOBILE ARENA**

## PROFILE

- 88 Years in Operation
- Women's Business Enterprise (WBE)
- Over 1,000 Highly Skilled Craftsmen and Artisans
- Theming Experts
- Early Adaptor of 3D/4D/5D Modeling
- Member of U.S. Green Building Council (USGBC)
- Member of Air Barrier Association of America (ABAA)
- AWCI EIFSsmart Contractor
- Strong Financial Resources and Bonding Capability
- Commitment to Safety – 2024 Ex. Mod. CA .57, NV .70



# MINGEI MUSEUM

**THE MINGEI INTERNATIONAL MUSEUM PROJECT WAS A MAJOR TRANSFORMATION OF THE BALBOA PARK FACILITY IN SAN DIEGO, REVEALING OVER 50,000 SQUARE FEET OF NEW MUSEUM SPACE.** When construction began, the Museum committed to reopening for maximum engagement and collaboration, with expanded access to collections, exhibitions and educational programming.

Raymond performed metal framing and drywall on the non-profit, LEED Gold, cultural center. Raymond also installed a variety of finishes, including cement board wall panels; GFRG, metal, and fabric ceiling panels; and drywall ceiling systems.

One of the biggest challenges of the project was incorporating all of the unique products and creative designs into the existing structure. Each component required a high level of precise layout, which, in turn, led to a highly in-depth shop drawing process.

- There were 230 cement board wall panels individually designed, with all cutouts for toilet accessories and elevator fronts, and 100 GFRG ceiling panels all 13'7" long by either 4'6", 4'10" or 6'9" wide.
- Designing and engineering the Unistrut system and the GFRG panel system together was a key component of the success of the overall gallery ceiling. Although only four pick points were required by engineering, eight were installed to be sufficiently flexible and avoid the complex mechanical systems above the GFRG. In addition, each panel has a 3" clearance between itself and the next panel on all four sides. The layout to bring the Unistrut system, the pick points, and the clearances together as one is a clear sign of quality workmanship in and of itself.
- Metal ceiling panels were laid out with perforations in each panel throughout. When precisely installed over its 100-foot length, the perforations, much like a player piano, emulate a song.
- The metal ceiling panels, fabric ceiling panels, and Ensemble ceiling panel system all work in perfect harmony with the GFRG ceilings to create a creative flow, which demanded the highest quality of workmanship.

## HIGHLIGHTS

### LOCATION

San Diego, CA

### YEAR COMPLETE

2021

### CONTRACT VALUE

\$6M

### GENERAL CONTRACTOR

Layton Construction

### ARCHITECT

Luce et studio

### SIZE

50,000 sq.ft.